

CERTIFICATE OF LOCATION OF GOVERNMENT CORNER

NE Corner of Section 34, Township 105, Range 42, \_\_\_\_\_ P.M.

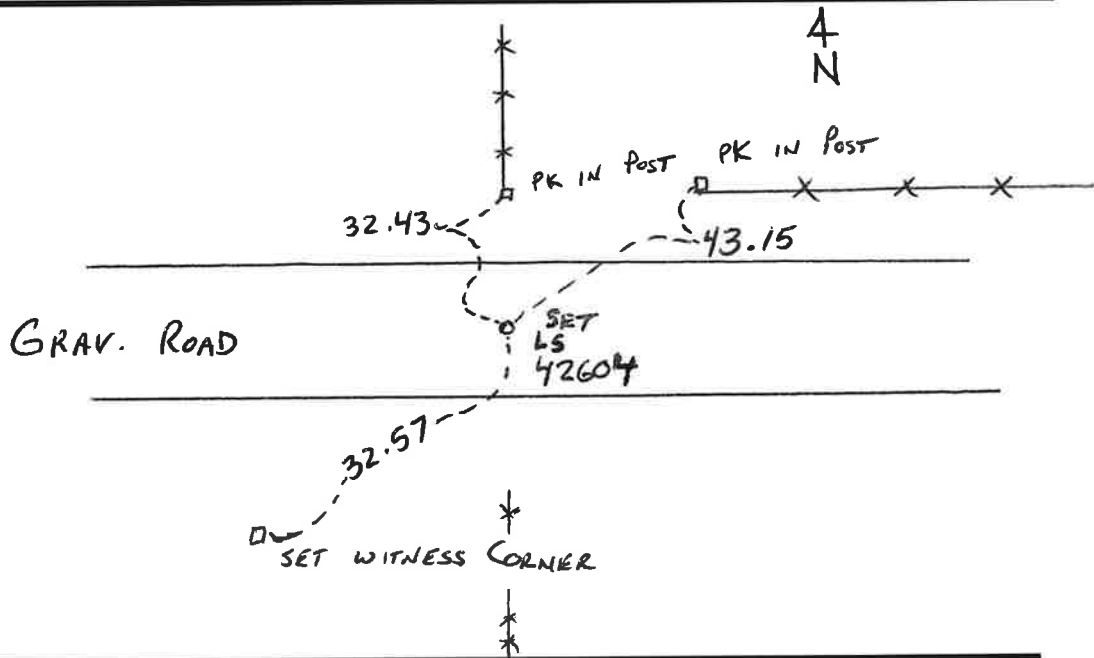
STATE OF MINNESOTA, County of Murray

At the corner location shown on the sketch:

On \_\_\_\_\_ found a \_\_\_\_\_  
Date

left monument as found,  lowered monument,  removed monument (explain)

On 8/10/2006 placed a 1/2" PIPE L.S 42604 0.4 deep @ E ROAD  
Date



I hereby certify that this document and the data contained herein was prepared by me or under my direct supervision.

Paul J. J. Signature      1-18-07 Date

Registration No. 42604

Land Surveyor,  Professional Engineer

County Surveyor,  County Engineer

OFFICE OF THE REGISTER OF DEEDS  
County of \_\_\_\_\_

I hereby certify that this document was filed in the Reg. of Deeds office at \_\_\_\_\_ M on the \_\_\_\_\_ day of \_\_\_\_\_ A.D., 20\_\_\_\_

Register of Deeds \_\_\_\_\_

By \_\_\_\_\_, Deputy

DOCUMENT NO. \_\_\_\_\_

FEB - 8 2007